

main objective...

... is to minimize the environmental impact related to water management in the subsectors with highest water consumption through effective demonstration

expected impact:



Reduction of water consumption

- 30% at meat industry
- 25% at canned vegetables industry
- 26% at juice industry



Reduction of thermal energy consumption

- 18% at meat industry
- 15% at canned vegetables industry
- 20% at juice industry



Reduction of electricity consumption

- 5% at meat industry
- 5% at canned vegetables industry
- 7% at juice industry



European scale project replication in 30 companies in the next 3 years, after the end of the project

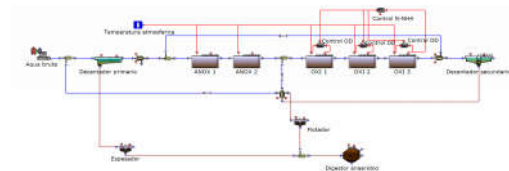
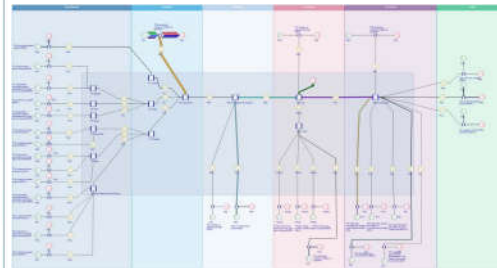
Proposed implementation methodology:

Production efficiency monitoring system

- Wirelessly monitors and calculates the production efficiency of the equipment
- It includes simultaneous water and energy consumption
- Does not interfere in the production processes



Mathematical modelling and simulation



- Mathematical models able to reproduce the production process and wastewater treatment processes will be employed
- This enables having simulations before implementation in real plant
- Validate the proposed solutions
- Transfer of knowledge about optimization processes

Efficiency measurement system

Data for model calibration and validation

Mathematical models

Proposal of new operating strategies

Pilot plant tests

Validation of new operating strategies

Real plant implementation

Replication and transference guide

Replication and transference in 30 companies at the same or different sub-sector

Continuous improvement

Pilot plant testing



- Pilot plants that reproduce the production line of the demonstrative case studies are available
- Enables optimizing the processes on pilot scale prior to real plant
- Validate the proposed solution.
- Reduces the actions taken in the company

Partners



LIFE MCUBO
LIFE15
ENV/ES/000379

